

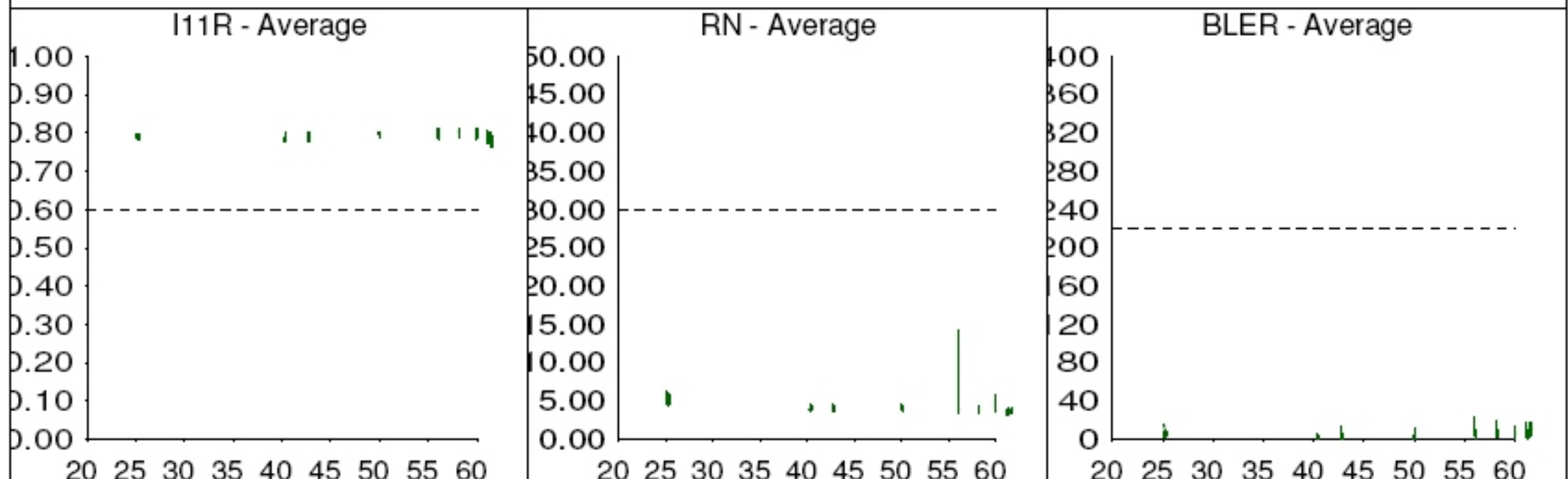
Production Name: AS30-P01 48X 23/5 DAY
 Production Number: LITEON 2'51
 Module(s): 1 - RLH2412
 Module Type(s): Sa3 CD-R Advanced
 Test Template: UMC 10 POINTS DAILY TESTING
 Test Result: **PASS**

PASS

Operator: QC
 Date: 05/23/28
 Time: 15:25:02 PM

| Parameter | Min | Max | Avg | Lower | Upper | Parameter | Min | Max | Avg | Lower | Upper |
|-----------|-------|-------|--------|-------|---------|-----------|---------|--------|----------|----------|----------|
| BLER | 0 | 24 | 5.5 | 0.0 | 220.0 | BEGL | 0 | 0 | 0.0 | 0.0 | 0.0 |
| E11 | 0 | 18 | 4.7 | | | PP | 0.096 | 0.103 | 0.0988 | 0.0800 | 0.1200 |
| E21 | 0 | 6 | 0.2 | | | XT | 30 | 31 | 30.1 | 0.0 | 50.0 |
| E31 | 0 | 20 | 0.6 | | | DEV | -0.03 | 0.05 | 0.013 | -0.500 | 0.500 |
| E12 | 0 | 314 | 6.7 | | | DEFL | 0.0 | 0.1 | 0.05 | -1.60 | 1.60 |
| E22 | 0 | 29 | 0.1 | | | PPC | 0.097 | 0.105 | 0.1001 | 0.0800 | 0.1200 |
| E32 | 0 | 0 | 0.0 | 0.0 | 0.0 | RCa | 0.444 | 0.452 | 0.4479 | 0.3000 | 0.6000 |
| BERL | 0 | 5 | 0.3 | 0.0 | 5.0 | IGa | 41.419 | 45.206 | 43.3123 | | |
| CRC | 0 | 3 | 0.1 | | | lLa | 66.212 | 70.995 | 68.6035 | | |
| SYM | -4 | 7 | 2.6 | -15.0 | 10.0 | PPa | 0.108 | 0.115 | 0.1114 | 0.0800 | 0.1200 |
| REF | 70 | 77 | 74.5 | 60.0 | 100.0 | SVY_OL | 1.20 | 1.21 | 1.202 | 1.200 | 1.400 |
| I3 | 0.31 | 0.39 | 0.357 | 0.300 | 0.700 | TRP_OL | 1.51 | 1.51 | 1.506 | 1.500 | 1.700 |
| I11 | 0.60 | 0.68 | 0.647 | 0.600 | 1.000 | E32Tot | | 0 | | 0.0 | 0.0 |
| I3R | 0.35 | 0.43 | 0.392 | 0.300 | 0.700 | WCNRa | 28.18 | 29.37 | 28.773 | 26.000 | 1000.000 |
| I11R | 0.76 | 0.81 | 0.790 | 0.600 | 1.000 | | | | | | |
| RN | 3.16 | 14.29 | 4.018 | 0.000 | 30.000 | | | | | | |
| RA | 0.17 | 0.33 | 0.196 | 0.000 | 0.400 | | | | | | |
| BETA | -8.4 | 4.6 | -3.69 | | | | | | | | |
| IGPa | 34 | 40 | 37.7 | | | | | | | | |
| WAWM | 12.07 | 34.43 | 24.976 | 0.000 | 100.000 | | | | | | |
| WGAA | 20.8 | 29.9 | 26.24 | | | | | | | | |
| NWAA | 0.029 | 0.041 | 0.0362 | | | | | | | | |
| VA | 1.25 | 1.73 | 1.379 | 0.000 | 10.000 | | | | | | |
| | | | | | | Physical | Layer 0 | | Limit 0 | Limit 1 | |
| | | | | | | ECC | 37 | | 0.0-70.0 | 0.0-70.0 | |

| Jitter DD (avg) | 3T | 4T | 5T | 6T | 7T | 8T | 9T | 10T | 11T |
|-----------------|-----|-----|----|----|----|----|----|-----|-----|
| Dev Land | -15 | -1 | 16 | 25 | 27 | 30 | 29 | 29 | 25 |
| Dev Pit | -42 | -13 | -2 | 14 | 20 | 25 | 24 | 19 | 12 |
| Jit Land | 33 | 34 | 32 | 33 | 31 | 32 | 30 | 29 | 37 |
| Jit Pit | 30 | 27 | 26 | 26 | 25 | 27 | 27 | 28 | 30 |



Production Name: BG30-P01 52x W 23/5 DAY
 Production Number: PLEXTOR 2'31
 Module(s): 3 - RLH2238
 Module Type(s): Sa3 CD-R Advanced
 Test Template: Written Quick 5 point
 Test Result: **PASS**

PASS

Operator: QC
 Date: 05/23/08
 Time: 09:52:41 AM

| Parameter | Min | Max | Avg | Lower | Upper | Parameter | Min | Max | Avg | Lower | Upper |
|-----------|-------|-------|--------|-------|---------|-----------|--------|--------|---------|--------|----------|
| BLER | 0 | 21 | 4.1 | 0.0 | 220.0 | BEGL | 0 | 0 | 0.0 | 0.0 | 0.0 |
| E11 | 0 | 19 | 3.9 | | | PP | 0.101 | 0.111 | 0.1051 | 0.0800 | 0.1200 |
| E21 | 0 | 8 | 0.1 | | | XT | 29 | 31 | 30.2 | 0.0 | 50.0 |
| E31 | 0 | 8 | 0.1 | | | DEV | -0.01 | 0.20 | 0.084 | -0.500 | 0.500 |
| E12 | 0 | 47 | 0.6 | | | DEFL | 0.0 | 0.5 | 0.20 | -1.60 | 1.60 |
| E22 | 0 | 0 | 0.0 | | | PPC | 0.102 | 0.114 | 0.1073 | 0.0800 | 0.1200 |
| E32 | 0 | 0 | 0.0 | 0.0 | 0.0 | RCa | 0.444 | 0.452 | 0.4479 | 0.3000 | 0.6000 |
| BERL | 0 | 3 | 0.1 | 0.0 | 5.0 | IGa | 42.184 | 56.313 | 47.2012 | | |
| CRC | 0 | 4 | 0.1 | | | ILa | 68.313 | 77.482 | 72.4488 | | |
| SYM | -6 | 3 | -0.7 | -15.0 | 10.0 | PPa | 0.101 | 0.113 | 0.1055 | 0.0800 | 0.1200 |
| REF | 68 | 75 | 72.8 | 60.0 | 100.0 | SVY_OL | 1.20 | 1.21 | 1.202 | 1.200 | 1.400 |
| I3 | 0.32 | 0.37 | 0.338 | 0.300 | 0.700 | TRP_OL | 1.51 | 1.51 | 1.506 | 1.500 | 1.700 |
| I11 | 0.61 | 0.66 | 0.636 | 0.600 | 1.000 | E32Tot | | 0 | | 0.0 | 0.0 |
| I3R | 0.35 | 0.41 | 0.379 | 0.300 | 0.700 | WCNRa | 26.80 | 30.75 | 28.858 | 26.000 | 1000.000 |
| I11R | 0.69 | 0.73 | 0.712 | 0.600 | 1.000 | | | | | | |
| RN | 4.61 | 7.83 | 6.102 | 0.000 | 30.000 | | | | | | |
| RA | 0.19 | 0.27 | 0.221 | 0.000 | 0.400 | | | | | | |
| BETA | -4.3 | 5.6 | -0.31 | | | | | | | | |
| IGPa | 33 | 39 | 37.2 | | | | | | | | |
| WAWM | 5.28 | 31.72 | 20.714 | 0.000 | 100.000 | | | | | | |
| WGAa | 21.7 | 31.9 | 28.09 | | | | | | | | |
| NWAa | 0.030 | 0.044 | 0.0385 | | | | | | | | |
| VA | 1.33 | 1.63 | 1.461 | 0.000 | 10.000 | | | | | | |

| Physical | Layer 0 | Limit 0 | Limit 1 |
|----------|---------|----------|----------|
| ECC | 31 | 0.0-70.0 | 0.0-70.0 |

| Jitter DD (avg) | 3T | 4T | 5T | 6T | 7T | 8T | 9T | 10T | 11T |
|-----------------|-----|-----|----|----|----|----|----|-----|-----|
| Dev Land | -24 | -2 | 21 | 32 | 38 | 39 | 40 | 37 | 32 |
| Dev Pit | -41 | -12 | 2 | 20 | 27 | 31 | 26 | 24 | 14 |
| Jit Land | 31 | 31 | 32 | 34 | 32 | 33 | 31 | 30 | 35 |
| Jit Pit | 35 | 31 | 28 | 26 | 27 | 28 | 29 | 30 | 33 |

